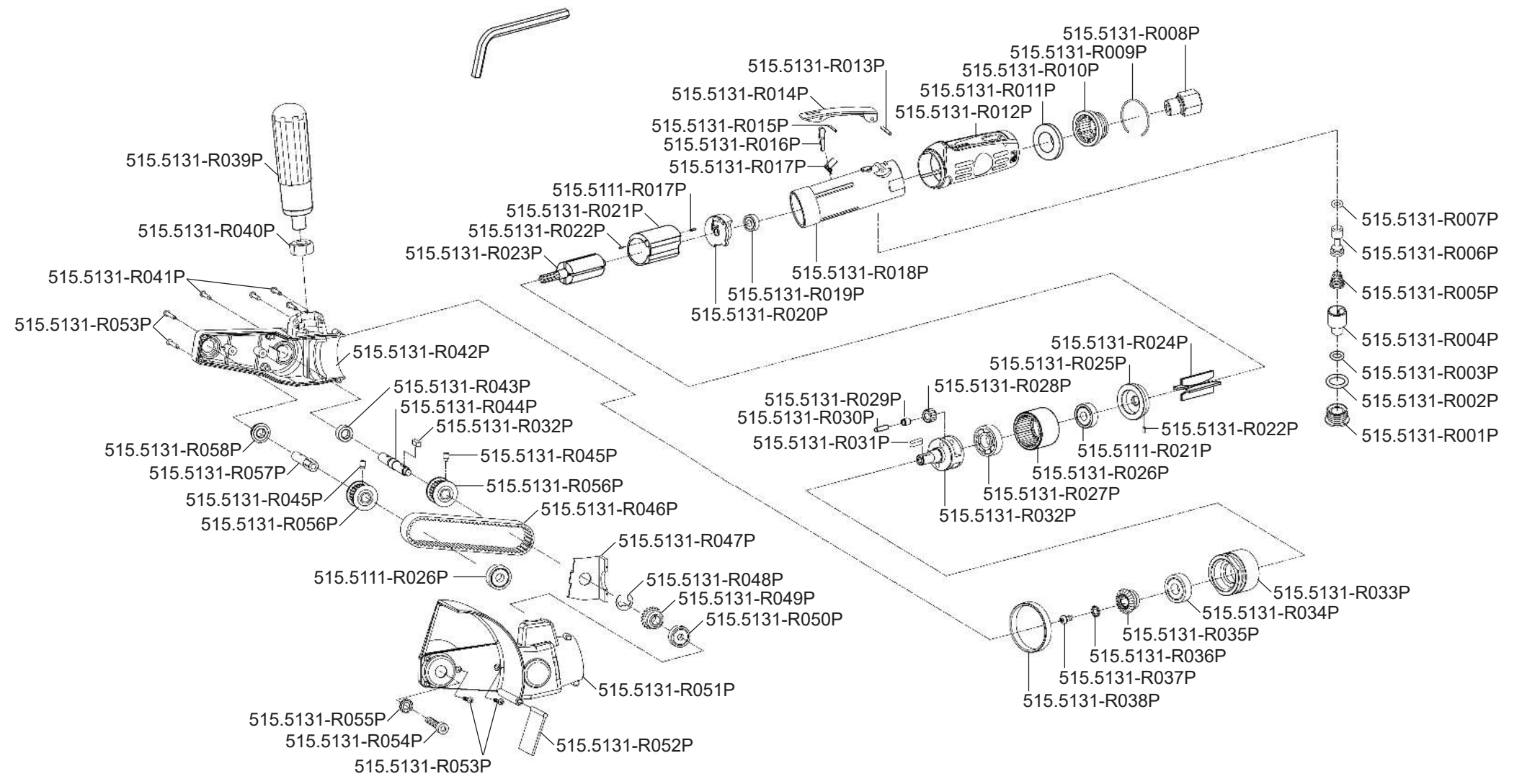


Art. 515.5131



**Art. 515.5131**

Art.-Nr.	Description	Beschreibung	Menge Qty.
515.5111-R017P	Spring Pin	Federstift	1
515.5111-R021P	Ball bearing	Kugellager	2
515.5111-R026P	Ball bearing	Kugellager	1
515.5131-R001P	Throttle valve plug	Drosselklappen Stecker	1
515.5131-R002P	O-ring	O-Ring	1
515.5131-R003P	O-ring	O-Ring	1
515.5131-R004P	Air regulator	Luftregler	1
515.5131-R005P	Spring	Feder	1
515.5131-R006P	Valve stem	Ventilschaft	1
515.5131-R007P	O-ring	O-Ring	1
515.5131-R008P	Air inlet	Lufteinlass	1
515.5131-R009P	Retaining ring	Haltering	1
515.5131-R010P	Exhaust deflector	Abluftdeflektor	1
515.5131-R011P	Muffler	Schalldämpfer	1
515.5131-R012P	Rubber handle cover	Griffgummierung	1
515.5131-R013P	Spring pin	Federstift	1
515.5131-R014P	Throttle lever assy	Hebel	1
515.5131-R015P	Spring pin	Federstift	1
515.5131-R016P	Trigger lock	Abzugsicherung	1
515.5131-R017P	Spring	Feder	1
515.5131-R018P	Motor housing	Motorgehäuse	1
515.5131-R019P	Ball bearing	Kugellager	1
515.5131-R020P	End plate	Endplatte	1
515.5131-R021P	Cylinder	Zylinder	1
515.5131-R022P	Spring pin	Federstift	2
515.5131-R023P	Rotor	Rotor	1
515.5131-R024P	Rotor blade	Rotorblatt	4
515.5131-R025P	Front rotor plate	Vordere Rotoraufnahme	1
515.5131-R026P	Internal gear	Stirnrad	1
515.5131-R027P	Ball bearing	Kugellager	1
515.5131-R028P	Planet gear	Planetenrad	2

Art.-Nr.	Description	Beschreibung	Menge Qty.
515.5131-R029P	Bushing	Buchse	2
515.5131-R030P	Pin	Stift	2
515.5131-R031P	Locking wedge	Haltekeil	2
515.5131-R032P	Planet cage	Gehäuse für Planetengetriebe	1
515.5131-R033P	Housing cap	Gehäusedeckel	1
515.5131-R034P	Ball bearing	Kugellager	1
515.5131-R035P	Bevel gear	Kegelradgetriebe	1
515.5131-R036P	Gear disc	Zahnscheibe	1
515.5131-R037P	Screw	Schraube	1
515.5131-R038P	Decoration ring	Zierring	1
515.5131-R039P	Handle	Griff	1
515.5131-R040P	Nut	Schraubenmutter	1
515.5131-R041P	Tapping screw	Blechschrabe	8
515.5131-R042P	Plastic housing right	Kunststoffgehäuse Rechts	1
515.5131-R043P	Ball bearing	Kugellager	1
515.5131-R044P	Belt drive shaft	Riemenantriebswelle	1
515.5131-R045P	Set screw	Stellschraube	2
515.5131-R046P	drivebelt	Zahnriemen	1
515.5131-R047P	Inner bulkhead	Innenschott	1
515.5131-R048P	Circlip	Sicherungsring	1
515.5131-R049P	Bevel bear	Kegelradgetriebe	1
515.5131-R050P	Ball bearing	Kugellager	1
515.5131-R051P	Plastic housing left	Kunststoffgehäuse Links	1
515.5131-R052P	Dust cover 29mm	Staubschutzhaube 29mm	1
515.5131-R053P	Tapping screw	Blechschrabe	4
515.5131-R054P	Inner hexagonal screw	Innen6kant Schraube	1
515.5131-R055P	Gear disc	Zahnradzscheibe	1
515.5131-R056P	Belt sprocket	Zahnriemenscheibe	2
515.5131-R057P	Spindle	Spindel	1
515.5131-R058P	Ball bearing	Kugellager	1