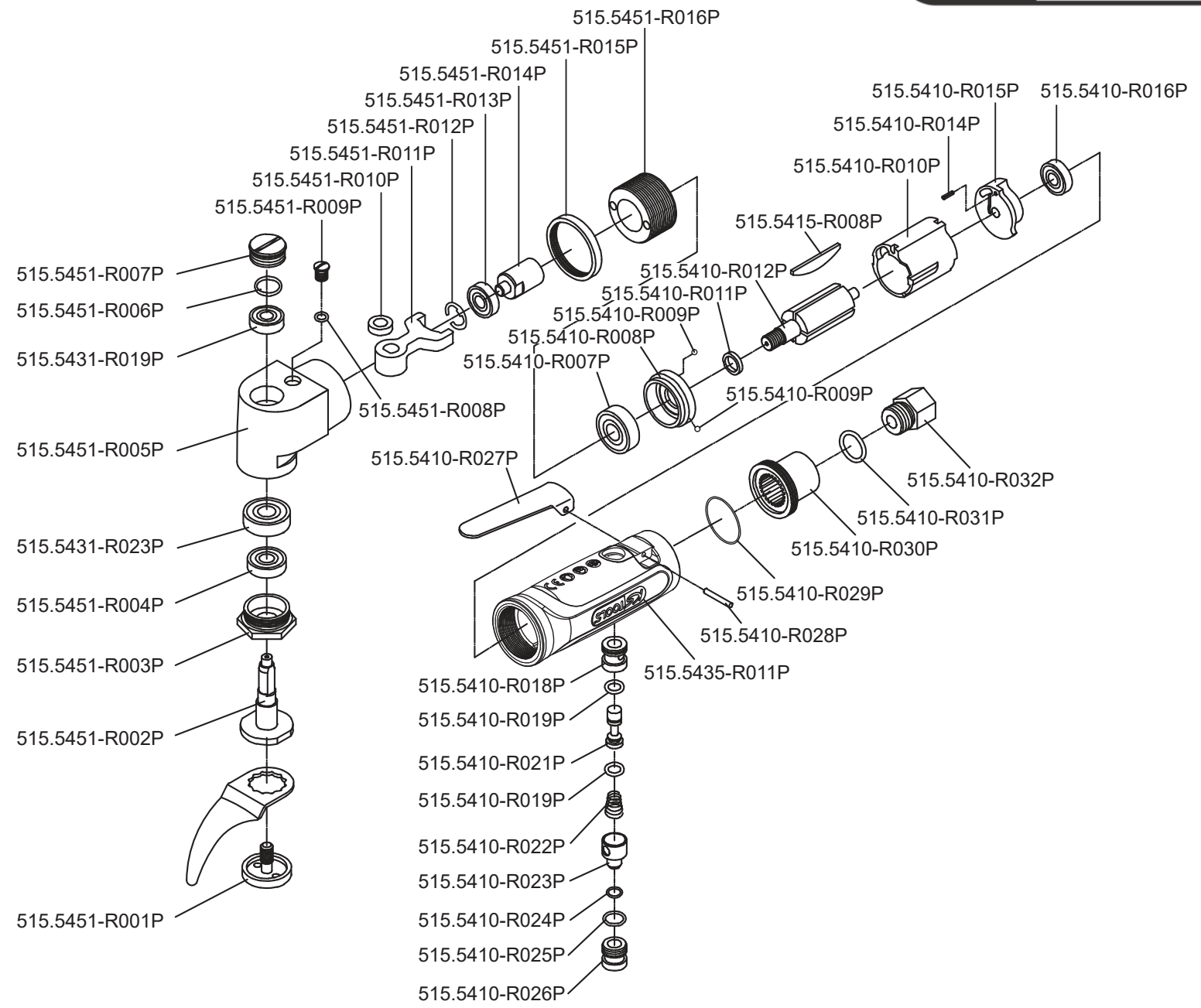


Art. 515.5451



Art. 515.5451

Art.-Nr.	Description	Beschreibung	Menge Qty.
515.5410-R007P	Ball bearing	Kugellager	1
515.5410-R008P	Front end plate	Vordere Verschlussplatte	1
515.5410-R009P	Steel ball	Stahlkugel	2
515.5410-R010P	Cylinder	Zylinder	1
515.5410-R011P	Rotor collar	Rotor Gewinding	1
515.5410-R012P	Rotor	Rotor	1
515.5410-R014P	Spring pin	Splint	1
515.5410-R015P	Rear end plate	Hintere Kugellageraufnahme	1
515.5410-R016P	Ball bearing	Kugellager	1
515.5410-R018P	Throttle valve bushing	Drosselventil Buchse	1
515.5410-R019P	O-ring	O-Ring	2
515.5410-R021P	Throttle valve	Drosselventil	1
515.5410-R022P	Throttle valve spring	Drosselventilfeder	1
515.5410-R023P	Air regulator	Druckluftregulierung	1
515.5410-R024P	O-ring	O-Ring	1
515.5410-R025P	O-ring	O-Ring	1
515.5410-R026P	Valve screw	Ventilschraube	1
515.5410-R027P	Throttle lever	Betätigungshebel	1
515.5410-R028P	Throttle lever pin	Betätigungshebelsplint	1
515.5410-R029P	O-ring	O-Ring	1
515.5410-R030P	Exhaust deflector	Abluftdeflektor	1
515.5410-R031P	O-ring	O-Ring	1

Art.-Nr.	Description	Beschreibung	Menge Qty.
515.5410-R032P	Air inlet	Lufteinlassschraube	1
515.5415-R008P	Rotor blade	Rotorblatt	4
515.5431-R019P	Ball bearing	Kugellager	1
515.5431-R023P	Ball bearing	Kugellager	1
515.5435-R011P	Motor housing	Antriebsgehäuse	1
515.5451-R001P	Screw for blade retainer	Schraube für Klingenthalterung	1
515.5451-R002P	Spindle drive	Antriebsspindel	1
515.5451-R003P	Housing nut	Gehäuseverschraubung	1
515.5451-R004P	Oil seal	Öldichtung	1
515.5451-R005P	Head of housing	Gehäusekopf	1
515.5451-R006P	O-ring	O-Ring	1
515.5451-R007P	Plug	Abschlussstopfen	1
515.5451-R008P	O-ring	O-Ring	1
515.5451-R009P	Oil screw	Ölschraube	1
515.5451-R010P	Spacer	Abstandsring	1
515.5451-R011P	Fork drive	Antriebsgabel	1
515.5451-R012P	Retaining ring	Seegerring	1
515.5451-R013P	Ball bearing	Kugellager	1
515.5451-R014P	Crank shaft	Kurbelwelle	1
515.5451-R015P	Nut	Mutter	1
515.5451-R016P	Drive bushing	Antriebsführung	1