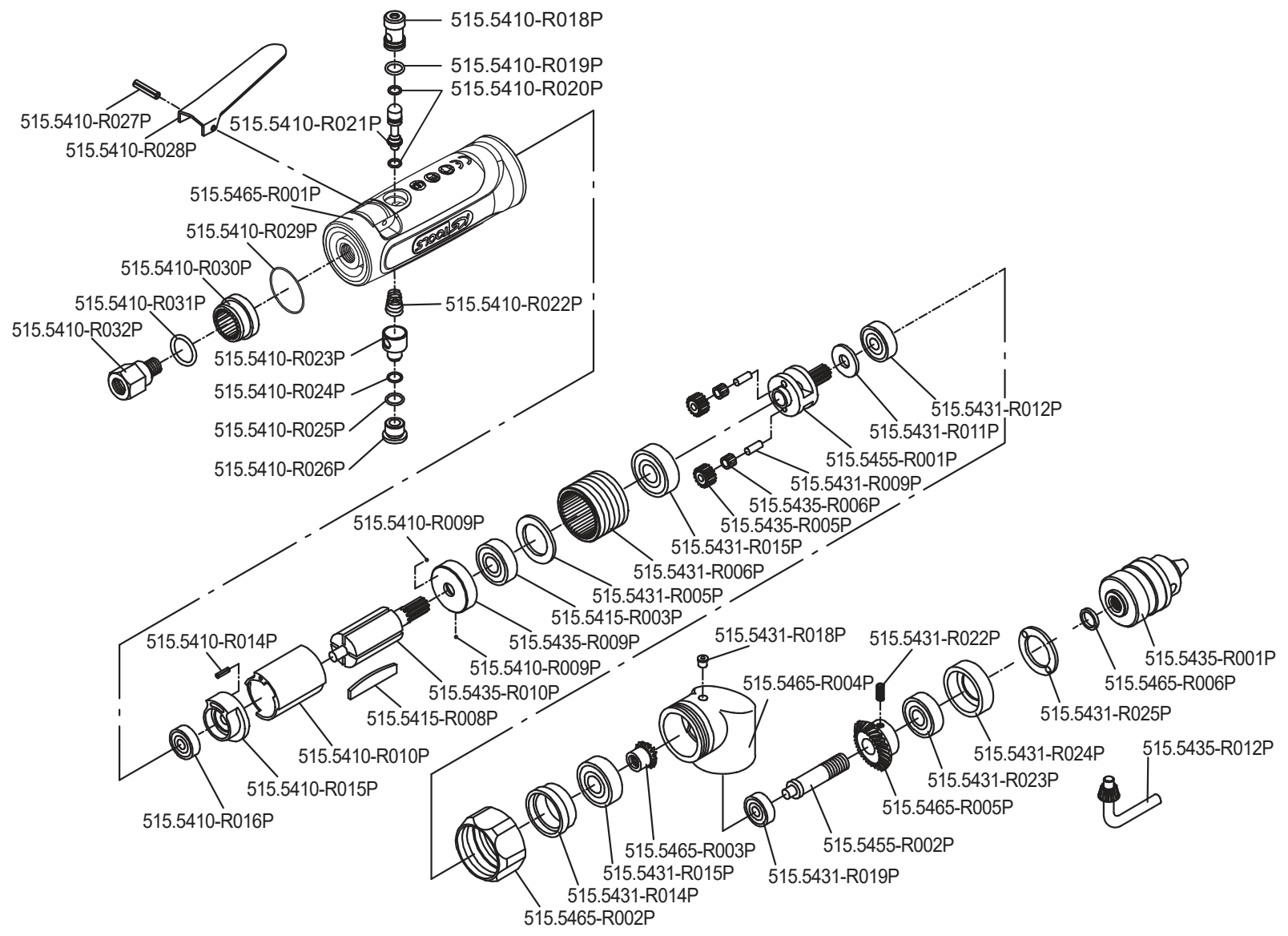


Art. 515.5465



Art. 515.5465

Art.-Nr.	Description	Beschreibung	Menge Qty.
515.5410-R009P	Steel ball	Stahlkugel	2
515.5410-R010P	Cylinder	Zylinder	1
515.5410-R014P	Spring pin	Splint	1
515.5410-R015P	Rear end plate	Hintere Kugellageraufnahme	1
515.5410-R016P	Ball bearing	Kugellager	1
515.5410-R018P	Throttle valve bushing	Drosselventil Buchse	1
515.5410-R019P	O-ring	O-Ring	1
515.5410-R020P	O-ring	O-Ring	2
515.5410-R021P	Throttle valve	Drosselventil	1
515.5410-R022P	Throttle valve spring	Drosselventilfeder	1
515.5410-R023P	Air regulator	Druckluftregulierung	1
515.5410-R024P	O-ring	O-Ring	1
515.5410-R025P	O-ring	O-Ring	1
515.5410-R026P	Valve screw	Ventilschraube	1
515.5410-R027P	Throttle lever	Betätigungshebel	1
515.5410-R028P	Throttle lever pin	Betätigungshebelsplint	1
515.5410-R029P	O-ring	O-Ring	1
515.5410-R030P	Exhaust deflector	Abluftdeflektor	1
515.5410-R031P	O-ring	O-Ring	1
515.5410-R032P	Air inlet	Lufteinlassschraube	1
515.5415-R003P	Ball bearing	Kugellager	1
515.5415-R008P	Rotor blade	Rotorblatt	5
515.5431-R005P	Washer	Unterlegscheibe	1
515.5431-R006P	Internal gear	Getriebering Innenverzahnt	1
515.5431-R009P	Planet pin	Pin für Zahnrad	2

Art.-Nr.	Description	Beschreibung	Menge Qty.
515.5431-R011P	Washer	Unterlegscheibe	1
515.5431-R012P	Ball bearing	Kugellager	1
515.5431-R014P	Bearing cover	Kugellagerführung	1
515.5431-R015P	Ball bearing	Kugellager	2
515.5431-R018P	Grease fitting	Schmiernippel	1
515.5431-R019P	Ball bearing	Kugellager	1
515.5431-R022P	Set screw	Stellschraube	1
515.5431-R023P	Ball bearing	Kugellager	1
515.5431-R024P	Front end plate	Vordere Verschlussplatte	1
515.5431-R025P	Clamp nut	Gehäuseverschraubung	1
515.5435-R001P	Chuck	Bohrfutter 1/4"	1
515.5435-R005P	Planet gear	Zahnrad für Planetengetriebe	2
515.5435-R006P	Bushing	Buchse	2
515.5435-R009P	End plate	Endplatte	1
515.5435-R010P	Rotor	Rotor	1
515.5435-R012P	Key	Schlüssel	1
515.5455-R001P	Planet cage	Gehäuse für Planetengetriebe	1
515.5455-R002P	Spindle	Spindel	1
515.5465-R001P	Housing	Gehäuse	1
515.5465-R002P	Clamp nut	Gehäuseverschraubung	1
515.5465-R003P	Pinion gear	Zahnkranzritzel	1
515.5465-R004P	Angle housing	Abgewinkeltes Gehäuse	1
515.5465-R005P	Pinion gear	Zahnkranzritzel	1
515.5465-R006P	Guiding ring	Führungsring	1