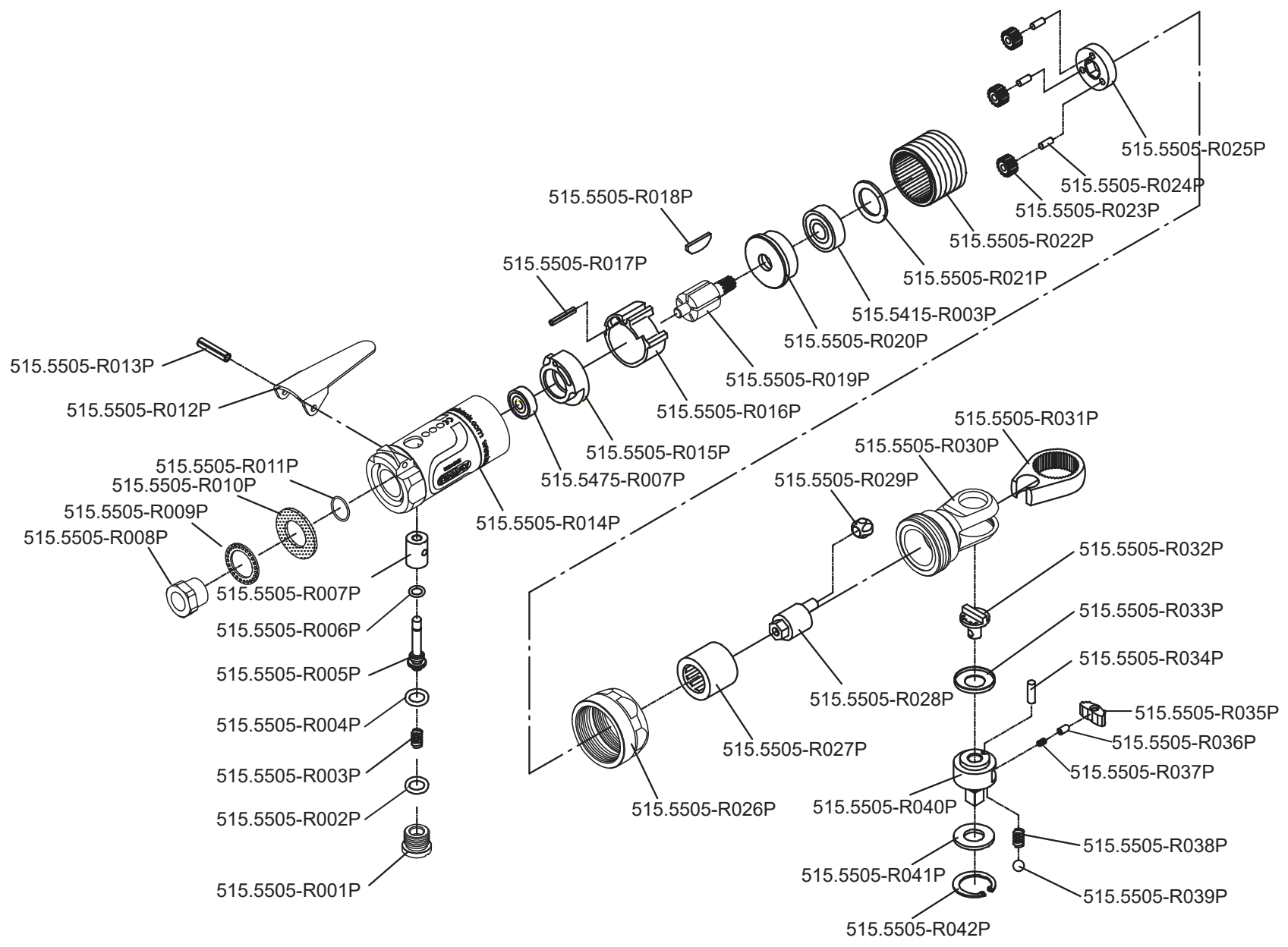


Art. 515.5505



**Art. 515.5505**

| Art.-Nr.       | Description       | Beschreibung               | Menge Qty. |
|----------------|-------------------|----------------------------|------------|
| 515.5415-R003P | Ball bearing      | Kugellager                 | 1          |
| 515.5475-R007P | Ball bearing      | Kugellager                 | 1          |
| 515.5505-R001P | Plug              | Abschlussstopfen           | 1          |
| 515.5505-R002P | O-Ring            | O-Ring                     | 1          |
| 515.5505-R003P | Spring            | Feder                      | 1          |
| 515.5505-R004P | O-Ring            | O-Ring                     | 1          |
| 515.5505-R005P | Valve stem        | Ventilstift                | 1          |
| 515.5505-R006P | O-Ring            | O-Ring                     | 1          |
| 515.5505-R007P | Valve bushing     | Ventilbuchse               | 1          |
| 515.5505-R008P | Air inlet bushing | Lufteinlassbuchse          | 1          |
| 515.5505-R009P | Exhaust deflector | Abluftdeflektor            | 1          |
| 515.5505-R010P | Muffler           | Schalldämpfer              | 1          |
| 515.5505-R011P | O-Ring            | O-Ring                     | 1          |
| 515.5505-R012P | Throttle lever    | Betätigungshebel           | 1          |
| 515.5505-R013P | Lever pin         | Hebelbolzen                | 1          |
| 515.5505-R014P | Motor housing     | Antriebsgehäuse            | 1          |
| 515.5505-R015P | Rear end plate    | Hintere Kugellageraufnahme | 1          |
| 515.5505-R016P | Cylinder          | Rotorgehäuse               | 1          |
| 515.5505-R017P | Pin               | Pin                        | 1          |
| 515.5505-R018P | Rotor blade       | Rotorblatt                 | 5          |
| 515.5505-R019P | Rotor             | Rotor                      | 1          |
| 515.5505-R020P | Front end plate   | Vordere Verschlussplatte   | 1          |

| Art.-Nr.       | Description       | Beschreibung        | Menge Qty. |
|----------------|-------------------|---------------------|------------|
| 515.5505-R021P | Washer            | Unterlegscheibe     | 1          |
| 515.5505-R022P | Ring gear         | Getriebering        | 1          |
| 515.5505-R023P | Gear              | Zahnrad             | 3          |
| 515.5505-R024P | Gear pin          | Zahnradpin          | 3          |
| 515.5505-R025P | Planet gear plate | Planetenträger      | 1          |
| 515.5505-R026P | Lock nut          | Sicherungsmutter    | 1          |
| 515.5505-R027P | Needle bearing    | Nadellager          | 1          |
| 515.5505-R028P | Crank shaft       | Kurbelwelle         | 1          |
| 515.5505-R029P | Drive bushing     | Antriebsführung     | 1          |
| 515.5505-R030P | Ratchet housing   | Ratschengehäusekopf | 1          |
| 515.5505-R031P | Ratchet yoke      | Ratschengabel       | 1          |
| 515.5505-R032P | Reverse Button    | Umkehrschalter      | 1          |
| 515.5505-R033P | Washer            | Unterlegscheibe     | 1          |
| 515.5505-R034P | Pin               | Stift               | 1          |
| 515.5505-R035P | Ratchet pawl      | Sperrklinke         | 1          |
| 515.5505-R036P | Spring cap        | Federkappe          | 1          |
| 515.5505-R037P | Spring            | Feder               | 1          |
| 515.5505-R038P | Spring            | Feder               | 2          |
| 515.5505-R039P | Steel ball        | Stahlkugel          | 2          |
| 515.5505-R040P | Anvil 1/4"        | Antriebskopf 1/4"   | 1          |
| 515.5505-R041P | Washer            | Unterlegscheibe     | 1          |
| 515.5505-R042P | Retaining Ring    | Seegerring          | 1          |