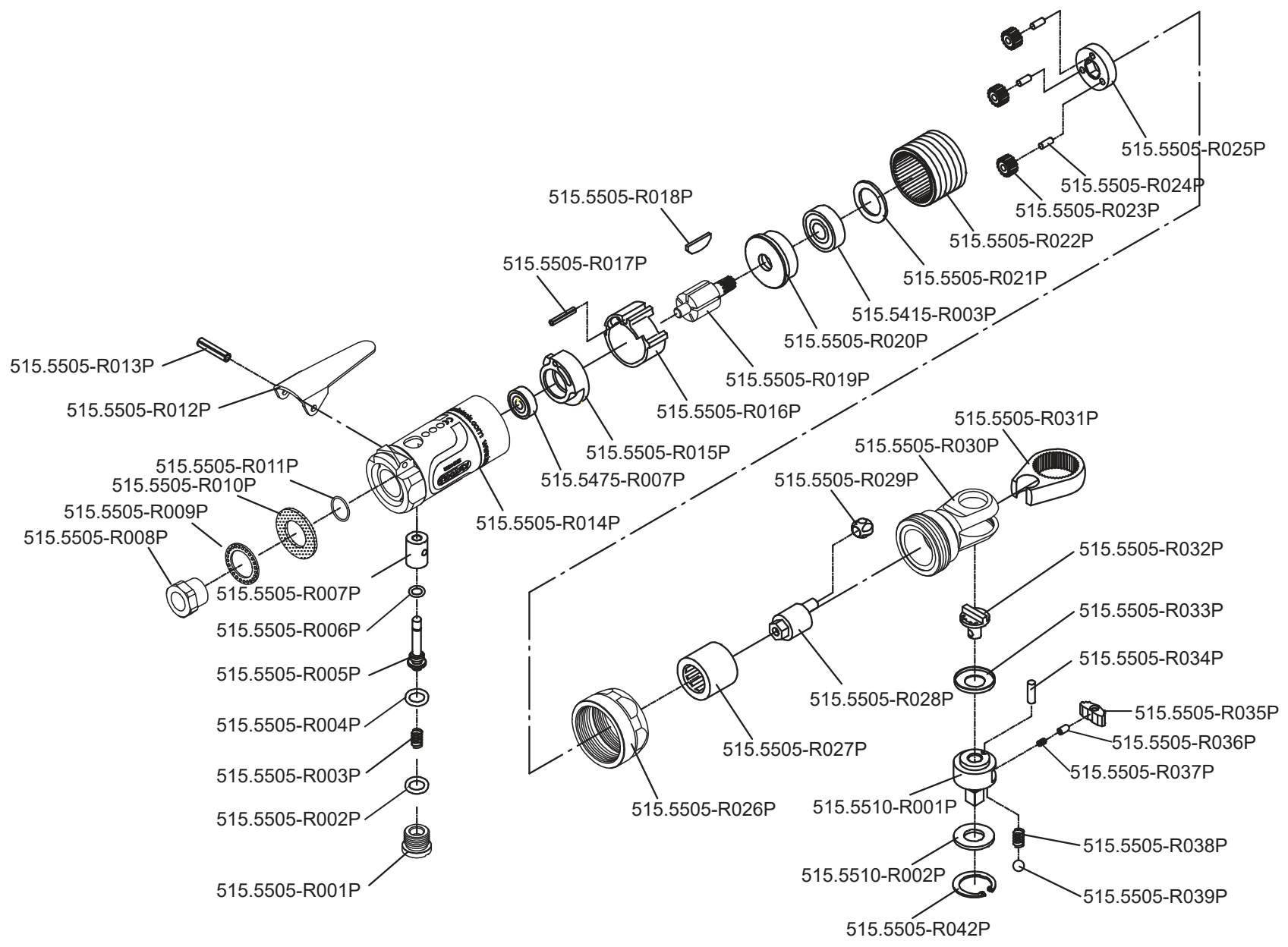


Art. 515.5510



**Art. 515.5510**

Art.-Nr.	Description	Beschreibung	Menge Qty.
515.5415-R003P	Ball bearing	Kugellager	1
515.5475-R007P	Ball bearing	Kugellager	1
515.5505-R001P	Plug	Abschlussstopfen	1
515.5505-R002P	O-Ring	O-Ring	1
515.5505-R003P	Spring	Feder	1
515.5505-R004P	O-Ring	O-Ring	1
515.5505-R005P	Valve stem	Ventilstift	1
515.5505-R006P	O-Ring	O-Ring	1
515.5505-R007P	Valve bushing	Ventilbuchse	1
515.5505-R008P	Air inlet bushing	Lufteinlassbuchse	1
515.5505-R009P	Exhaust deflector	Abluftdeflektor	1
515.5505-R010P	Muffler	Schalldämpfer	1
515.5505-R011P	O-Ring	O-Ring	1
515.5505-R012P	Throttle lever	Betätigungshebel	1
515.5505-R013P	Lever pin	Hebelbolzen	1
515.5505-R014P	Motor housing	Antriebsgehäuse	1
515.5505-R015P	Rear end plate	Hintere Kugellageraufnahme	1
515.5505-R016P	Cylinder	Rotorgehäuse	1
515.5505-R017P	Pin	Pin	1
515.5505-R018P	Rotor blade	Rotorblatt	5
515.5505-R019P	Rotor	Rotor	1
515.5505-R020P	Front end plate	Vordere Verschlussplatte	1

Art.-Nr.	Description	Beschreibung	Menge Qty.
515.5505-R021P	Washer	Unterlegscheibe	1
515.5505-R022P	Ring gear	Getriebering	1
515.5505-R023P	Gear	Zahnrad	3
515.5505-R024P	Gear pin	Zahnradpin	3
515.5505-R025P	Planet gear plate	Planetenträger	1
515.5505-R026P	Lock nut	Sicherungsmutter	1
515.5505-R027P	Needle bearing	Nadellager	1
515.5505-R028P	Crank shaft	Kurbelwelle	1
515.5505-R029P	Drive bushing	Antriebsführung	1
515.5505-R030P	Ratchet housing	Ratschengehäusekopf	1
515.5505-R031P	Ratchet yoke	Ratschengabel	1
515.5505-R032P	Reverse Button	Umkehrschalter	1
515.5505-R033P	Washer	Unterlegscheibe	1
515.5505-R034P	Pin	Stift	1
515.5505-R035P	Ratchet pawl	Sperrklinke	1
515.5505-R036P	Spring cap	Federkappe	1
515.5505-R037P	Spring	Feder	1
515.5505-R038P	Spring	Feder	2
515.5505-R039P	Steel ball	Stahlkugel	2
515.5505-R042P	Retaining Ring	Seegerring	1
515.5510-R001P	Anvil 3/8"	Antriebskopf 3/8"	1
515.5510-R002P	Washer	Unterlegscheibe	1