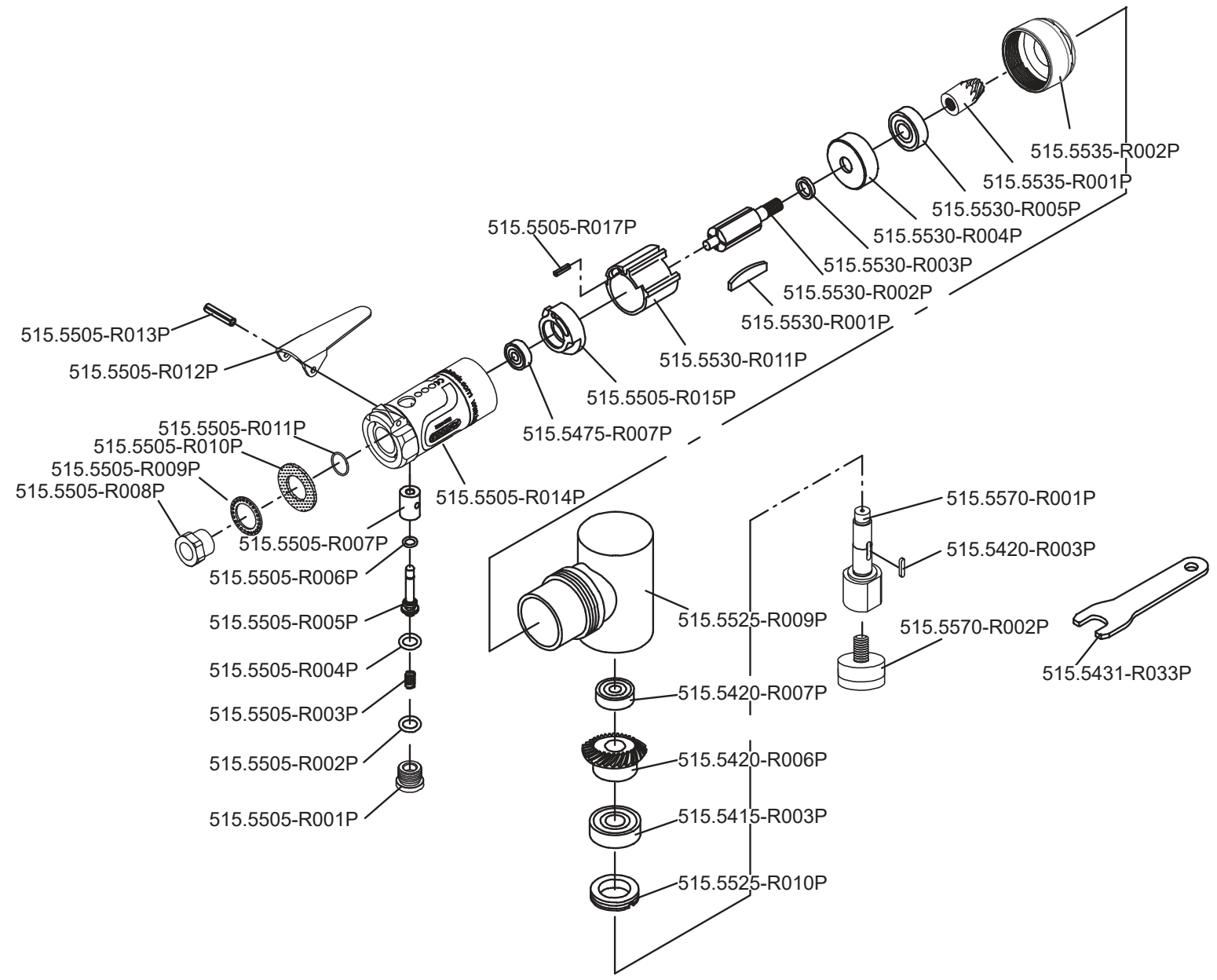


Art. 515.5570



Art. 515.5570

Art.-Nr.	Description	Beschreibung	Menge Qty.
515.5415-R003P	Ball bearing	Kugellager	1
515.5420-R003P	Shaft	Antriebsspindel	1
515.5420-R006P	Spindle gear	Getriebespindel	1
515.5420-R007P	Ball bearing	Kugellager	1
515.5431-R033P	Spanner	Schraubenschlüssel	1
515.5475-R007P	Ball bearing	Kugellager	1
515.5505-R001P	Plug	Abschlussstopfen	1
515.5505-R002P	O-Ring	O-Ring	1
515.5505-R003P	Spring	Feder	1
515.5505-R004P	O-Ring	O-Ring	1
515.5505-R005P	Valve stem	Ventilstift	1
515.5505-R006P	O-Ring	O-Ring	1
515.5505-R007P	Valve bushing	Ventilbuchse	1
515.5505-R008P	Air inlet bushing	Lufteinlassbuchse	1
515.5505-R009P	Exhaust deflector	Abluftdeflektor	1
515.5505-R010P	Muffler	Schalldämpfer	1
515.5505-R011P	O-Ring	O-Ring	1

Art.-Nr.	Description	Beschreibung	Menge Qty.
515.5505-R012P	Throttle lever	Betätigungshebel	1
515.5505-R013P	Lever pin	Hebelbolzen	1
515.5505-R014P	Motor housing	Antriebsgehäuse	1
515.5505-R015P	Rear end plate	Hintere Kugellageraufnahme	1
515.5505-R017P	Pin	Pin	1
515.5525-R009P	Angle Head Housing	Winkelkopfgehäuse	1
515.5525-R010P	Clamp Nut	Gehäuseverschraubung	1
515.5530-R001P	Rotor blade	Rotorblatt	4
515.5530-R002P	Rotor	Rotor	1
515.5530-R003P	Rotor Collar	Rotor Gewinding	1
515.5530-R004P	Front end plate	Vordere Verschlussplatte	1
515.5530-R005P	Ball bearing	Kugellager	1
515.5530-R011P	Cylinder	Rotorgehäuse	1
515.5535-R001P	Pinion gear	Zahnkranzritzel	1
515.5535-R002P	Housing Cap	Gehäusedeckel	1
515.5570-R001P	Spindle	Spindel	1
515.5570-R002P	Adapter	Adapter	1